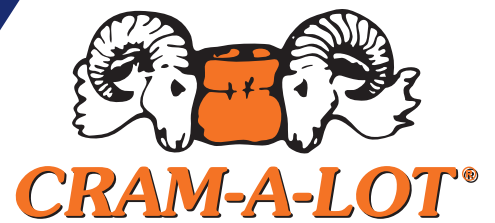


X-Press Pack



"EQUIPPING THE WORLD FOR A BETTER ENVIRONMENT"™



Benefits of an X-Press Pack

These compact self-contained units offers the same liquid tight containment as a standard size compactor but in a more compact size for space limitations while offering the same benefits of a larger unit with it's optional chute fed or hopper fed system.

These X-Press Pack compactors are designed to fit in most existing container enclosures, introduces a desirable low loading height for those who deposit the waste, and eliminates the need for separating the container from the compactor. Less trips for the hauler equaling savings to the customer through compaction.

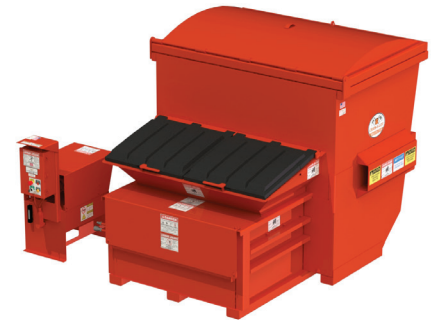
Ease of usage makes the X-Press Pack a perfect portable compactor ready to use and requires no additional site prep such as concrete pad, anchors or channel guides. This unit is ideal for general restaurants, fast food locations, small retail centers, schools, and mid-sized hotels.

Features & Benefits

- UL/CUL listed Control Panel
- Liquid tight compactor/container
- Remote Power Unit
- Large 46 x 21 -1/2" Charge Opening
- Low loading height for easy loading
- Fully (UHMW) guided & supported ram
- Fixed breaker bar teeth aid in trash retention
- ANSI Z245.21 Compliant
- Rugged Construction provides long life
- Can easily be used in long or short term locations
- Eliminates the unsightly mess of spillage by hauler
- Excellent Compaction of dry and/or wet material
- Compaction ratios average 4 to 1, depending on material
- Ideal for Resturants, Fast Food locations, Shopping Centers, Supermarkets, Hospitals, Schools, Nursing Homes, and Hotels

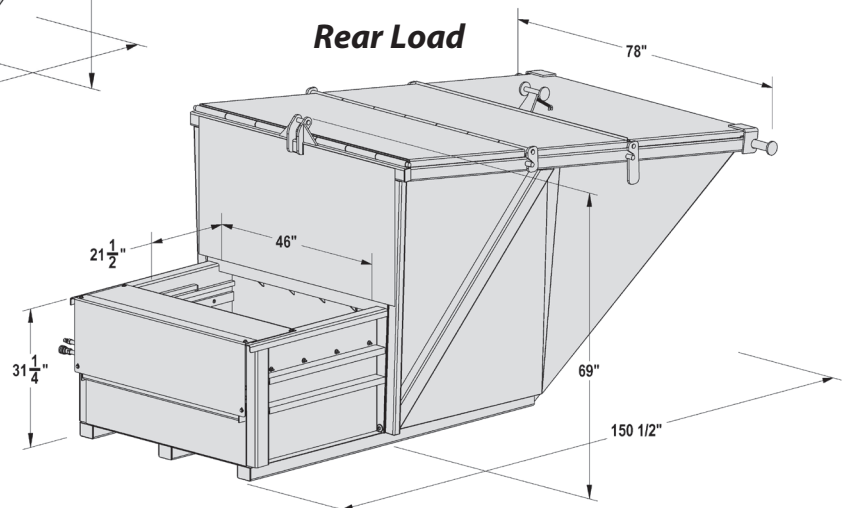
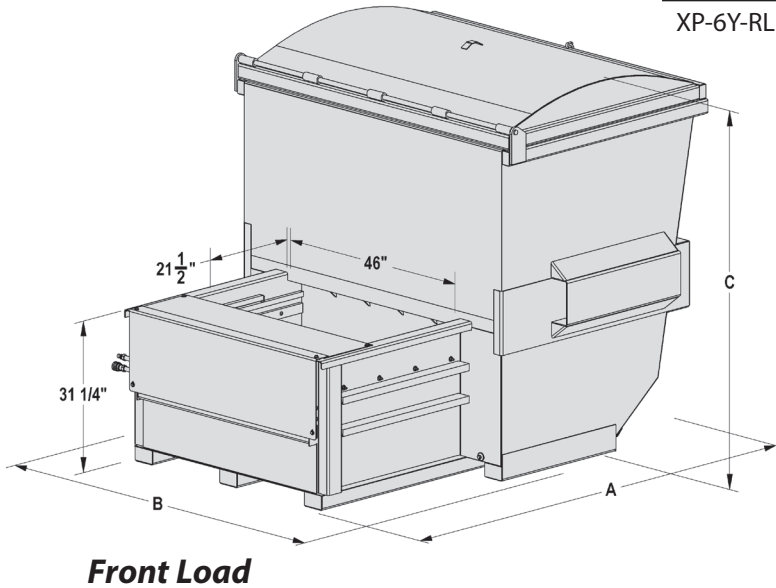
Optional Features

- Ground feed or dock feed hoppers
- Through The Wall chute feed
- Custom hoppers
- Cart dumper
- Full lights
- Multi-cycle



Dimensions

	Overall Depth (A)	Clear Top (L X W)	Overall Width (B)	Loading Height	Overall Height (C)	Base Unit Weight
XP-3Y-FL	89 1/2"	21 1/2" x 46"	81"	31 1/4"	53 1/2"	2930 lbs
XP-4Y-FL	98"	21 1/2" x 46"	81"	31 1/4"	60"	3050 lbs
XP-6Y-FL	98"	21 1/2" x 46"	81"	31 1/4"	78"	3190 lbs
XP-6Y-RL	150 1/4"	21 1/2" x 46"	78"	31 1/4"	69"	3475 lbs



Specifications

		All X-Press Pack Models
Charge Box Capacity		Varies by Model
NWRA Rated Size		0.41
Theoretical Cycle Time		28 sec
Total Force	Normal	18,300 lbs
	Maximum	19,500 lbs
Ram Face Pressure	Normal	20.0 psi
	Maximum	21.5 psi
Ram Face Dimensions	(W x H)	48"x 19"
Ram Penetration		5"

Motor - 3 Phase	208/230/460 VAC	3 hp
Motor - 1 Phase	230 VAC	3 hp
Pump Capacity		3 gpm
Hydraulic Reservoir	Capacity	14 gal
Hydraulic Cylinder	Bore Diameter	(two) 2 1/2"
	Stroke	18"
	Rod Diameter	1 1/4"
Operating Pressure	Normal	2,250 psi
	Maximum	2,400 psi
Complete Unit UL Listed		No



CRAM-A-LOT®



Corporate Office

701 Butterfield Coach Rd. - P.O. Box 229 - Springdale, AR 72765-0229
1-800-678-7320 - 479-751-7320 - Fax: 479-872-0037

www.cram-a-lot.com