

our service alone could make you our customer

# RUGGED CONSTRUCTED RECEIVERS

“Equipping The World For A Better Environment”

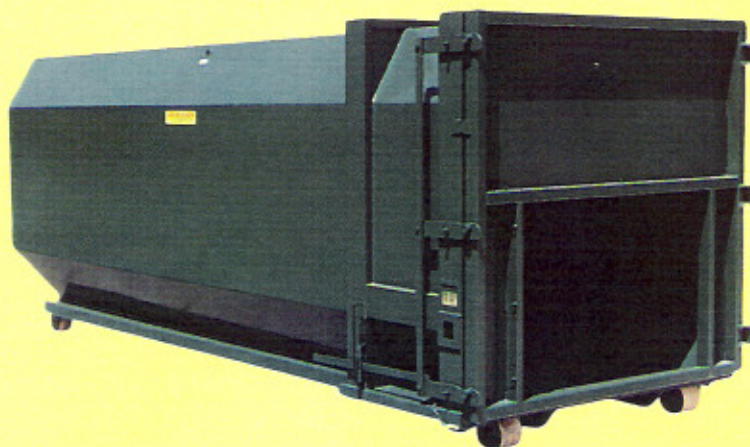
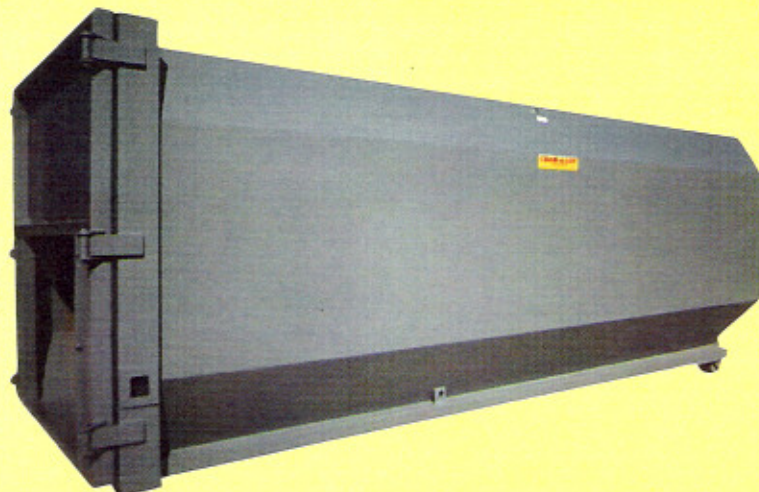
# CRAM-A-LOT®

J.V. Manufacturing, Inc.

Solid Waste & Recycling Equipment



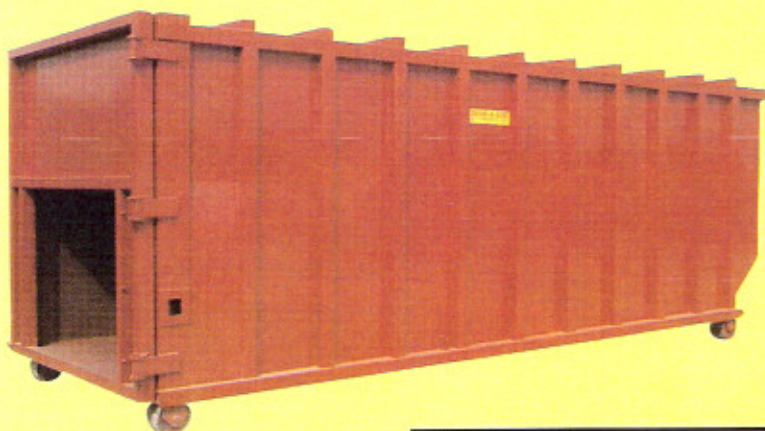
**MODEL RO-40  
40 YARD  
OCTAGONAL  
RECEIVER**



**HEAVY DUTY  
MODEL RO-40  
40 YARD  
OCTAGONAL  
RECEIVER**

Reinforced with extra strength band for twin cylinder compactors

**42 YARD  
and  
50 YARD  
RECTANGULAR  
RECEIVERS  
also available**



*Parts and Labor are Warranted for One Year against materials and workmanship under normal usage.*

**J.V. MANUFACTURING, INC.**

Balers • Compactors • Containers • Transfer Stations

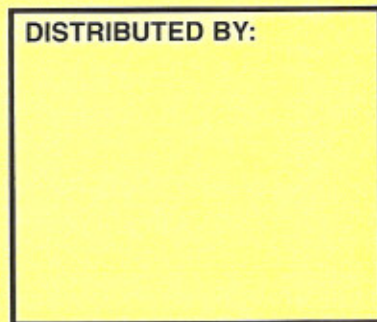
**Corporate**

701 Butterfield Coach Road P.O. Box 229 Springdale, AR 72765  
1-800-678-7320 fax 501-751-7774 www.cram-a-lot.com

**Cram-A-Lot® West**

1501 Weyand Ave. Sacramento, CA 95828  
1-888-431-3094 916-381-1600 fax 916-381-2748

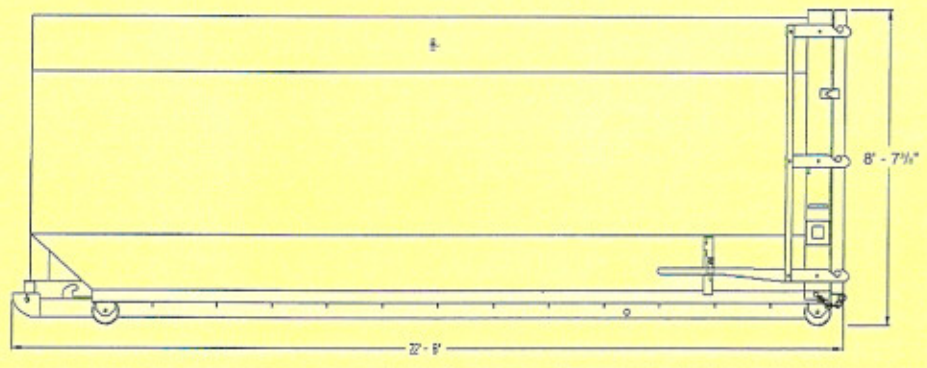
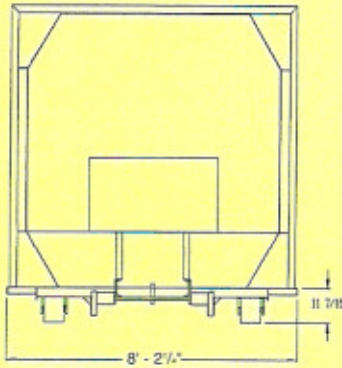
**DISTRIBUTED BY:**





# CRAM-A-LOT® MODEL RO-40

## 40 YARD OCTAGONAL COMPACTOR RECEIVER

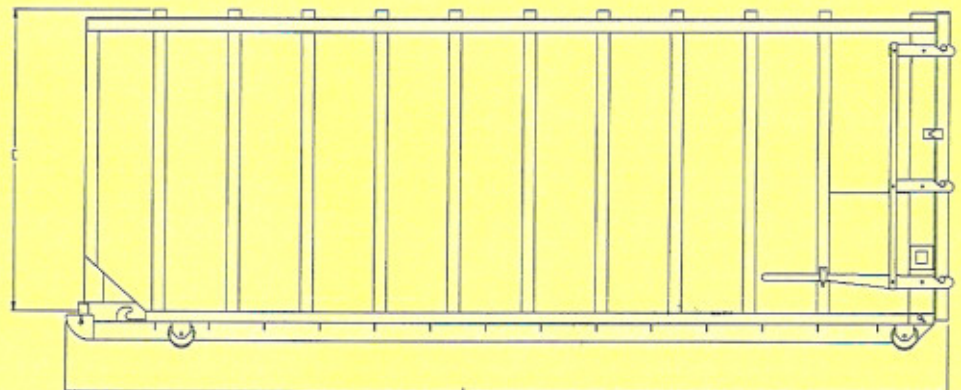
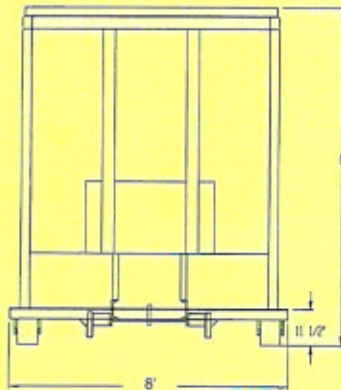


### STANDARD SPECIFICATIONS\*

FLOOR: 3/16" Plate (1/4" Plate Available for HD Containers)
SIDES: 3/16" Plate
MAIN RAILS: 6" x 2" x 3/16" Tubing (6" x 2" x 3/8" Available for HD Containers)
CROSS MEMBERS: 3" Channel on 18" Centers
WHEELS: 8 1/2" Diameter x 7" Wide, Front & Rear
DOOR: 3 Hinges 1" x 4" Hinge Bar with 15/16" Diameter Hinge Pins 3 Point Latch System with Locking Mechanism
GUIDE ROLLERS: 4" Diameter x 6" Wide

\*Also Available in Heavy Duty

## RECTANGULAR COMPACTOR RECEIVER



### DIMENSIONS

Model	A	B	C
RR-42	278	98	87
RR-50	290	110	99

In order to provide the most currently engineered and designed equipment, we reserve the right to change specifications without prior notice. This brochure is intended to provide information only and should not be used in an arbitrary manner to judge equipment for any particular purpose. Performance may vary with application. Products must be installed and operated according to required standards, codes, regulations and safety procedures. Only the standard written warranty issued by J.V. Manufacturing, Inc. applies.

### STANDARD SPECIFICATIONS\*

FLOOR: 3/16" Plate (1/4" Plate Available for HD Containers)
SIDES: 10 GA. Sheet with 4 x 3 Formed Channel Side Stiffeners on 24" Centers and a 4" x 3" Tubing Top Rail
MAIN RAILS: 6" x 2" x 3/16" Tubing (6" x 2" x 3/8" Available for HD Containers)
CROSS MEMBERS: 3" Channel on 18" Centers
WHEELS: 8 1/2" Diameter x 7" Wide, Front & Rear
GUIDE ROLLERS: 4" Diameter x 6" Wide

\*Also Available in Heavy Duty

**Manufacturing a full line of CRAM-A-LOT® Solid Waste Equipment**