

our service alone could make you our customer

HORIZONTAL CLOSED END BALERS

DESIGNED FOR WAREHOUSES,
INDUSTRIAL AND COMMERCIAL
APPLICATIONS

“equipping the world for a better environment”

CRAM-A-LOT®

SOLID WASTE AND RECYCLING EQUIPMENT



Balers available for waste paper, corrugated, newsprint, office white, plastics, foam rubber, light aluminum and other recyclables

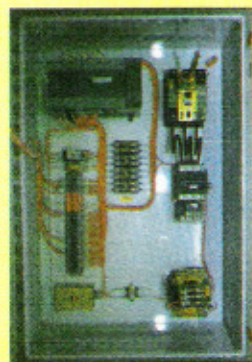
Cram-A-Lot Closed-End Horizontal Balers are designed for ease of installation, operation and maintenance. Balers operate manually or automatically with photo electric cell control. Optional custom engineered feed conveyors and cart dumper systems efficiently control baler feed rates for optimum performance in a complete baling system.

STANDARD FEATURES:

- PROGRAMMABLE LOGIC CONTROLLERS FOR TROUBLE FREE OPERATION
- MODULAR HYDRAULIC POWER UNIT FOR EASY MAINTENANCE
- ADJUSTABLE HARDENED STEEL SHEAR SYSTEM
- AUTOMATIC BALE EJECTION

MODELS:

- HH-60
- HX-60
- HX-72



UL/UL CANADA ELECTRICAL CONTROLS
HOUSED IN NEMA 12 CONTROL PANEL

Rental and Leasing Program Available

*Parts and Labor are Warranted for One Year
against materials and workmanship under normal usage.*

J.V. MANUFACTURING, INC.

BALERS • COMPACTORS • CONTAINERS • TRANSFER STATIONS

701 Highway 265-S P.O. Box 229 (501) 751-7320

Phone 1-800-678-7320 FAX (501) 751-7774

SPRINGDALE, ARKANSAS 72765-0229

www.cram-a-lot.com

DISTRIBUTED BY:





SPECIFICATIONS

| MODEL | HH-60 | HX-60 | HX-72 |
|-----------------------------|-----------------|------------------|------------------|
| Bale Size L x W x H | 60" x 30" x 40" | 60" x 30" x 40" | 72" x 42" x 48" |
| Bale Weight - Corrugated | 850 - 1100 Lbs. | 1100 - 1400 Lbs. | 1800 - 2200 Lbs. |
| Plastic | 700 - 850 Lbs. | 900 - 1100 Lbs. | NR |
| Operating Pressure - Normal | 2000 psi | 2800 psi | 2000 psi |
| Maximum | 2400 psi | 3100 psi | 2400 psi |
| Motor (230/460 VAC) | 20 hp | 25 hp | 30 hp |
| Pump Capacity | 36 gpm | 34 gpm | 63 gpm |
| Main Cylinder - Bore | 7" | 7" | 8" |
| Stroke | 54" | 54" | 70" |
| Rod | 4" | 4" | 5" |
| Door Cylinder - Bore | 3 1/2" | (2) 4" | 4" |
| Stroke | 12" | 12" | 12" |
| Platen Force - Normal | 77,000 lbs. | 107,800 lbs. | 100,500 lbs. |
| Maximum | 92,400 lbs. | 119,300 lbs. | 120,600 lbs. |
| Tank Capacity | 80 gal. | 80 gal. | 180 gal. |
| Cycle Time | 25 sec. | 20 sec. | 24 sec. |

| DIMENSIONS | HH-60 | HX-60 | HX-72 |
|-------------------------|-------|-------|-------|
| A Overall Width | 46" | 46" | 67" |
| B Overall Height | 86" | 86" | 94" |
| C Overall Length | 200" | 200" | 248" |
| D Charge Opening Width | 30" | 30" | 40" |
| E Charge Opening Length | 42" | 42" | 57" |
| F Frame Height | 49" | 49" | 58" |

STANDARD FEATURES

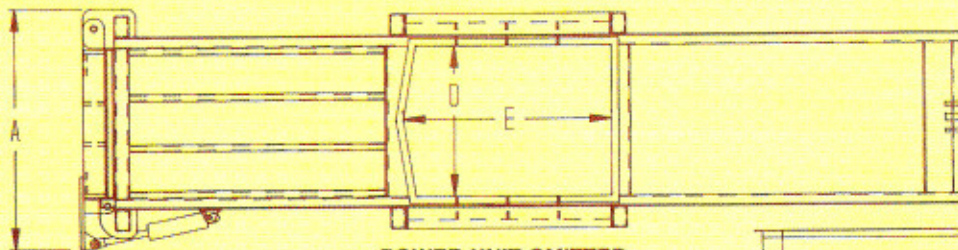
- > UL/UL Canada listed Control Panel
- > Programmable Controller standard on all models
- > Automatic Bale-Sizing System
- > Full-Bale and Advance Warning Indicators
- > Built-in Shear Blade
- > Automatic Cycle controlled by Photocell
- > Automatic Bale-Ejection System
- > Feed Hopper

OPTIONAL FEATURES

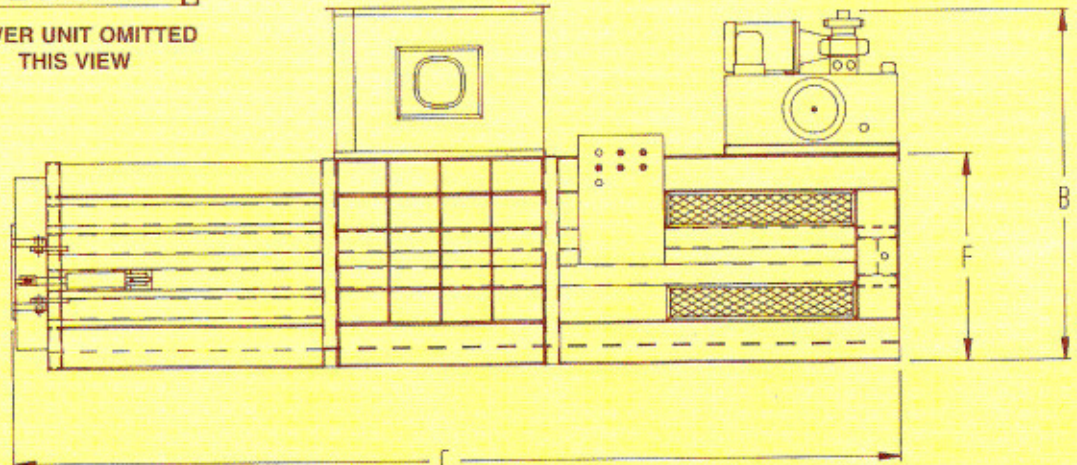
- > Remote Power Unit
- > Conveyor Feed Controls with Photocell
- > Forced Air/Oil Cooler
- > Semi-automatic Wire-tying Systems
- > Feed Conveyors
- > Bale-handling Roller Conveyors
- > Custom Feed Hoppers

NOTE: For continuous operation the oil cooler option is required.

In order to provide the most currently engineered and designed equipment, we reserve the right to change specifications without prior notice. This brochure is intended to provide information only and should not be used in an arbitrary manner to judge equipment for any particular purpose. Performance may vary with application. Products must be installed and operated according to required standards, codes, regulations and safety procedures. Only the standard written warranty issued by J.V. Manufacturing, Inc. applies.



POWER UNIT OMITTED
THIS VIEW



This equipment conforms to all current ANSI Z 245.5 safety standards.